



Kaharoa Management Area Pest Control 2024

The Kaharoa Kōkako Trust has been conducting pest control in the Kaharoa Management Area for 27 years. By controlling possums and rats prior to bird nesting, we are improving the ecosystem and allowing all forest birds, including Kaharoa kōkako populations to increase.

In collaboration with Port Blakely Ltd. and Tapuika Iwi Authority, we are writing to advise you of our plans to conduct pest control operations in the Kaharoa Management Area, and selected sites within Port Blakely's Pinnacles and Te Matai Pine Forests.

The first of these operations, was in May using an application of Pindone, into bait stations in the forests accessed off Kapukapu Road only. It was highly successful reducing ship rats to very low levels.

In October, 1080 cereal baits will be applied in bait stations throughout the Management area. For the areas adjacent to public roads, or on neighbour's boundaries, Double Tap (Diphacinone & Cholecalciferol) will be applied to provide a buffer.

The areas are indicated on the attached operational map. The main public accesses are from the end of Kapukapu Road and the end of Kaharoa Rd for the Kaharoa Conservation Area and Port Blakely Pinnacles Forest, and off Te Matai Road for the Te Matai Pine Forest.

This pest control will be carried out by suitably qualified personnel in strict accordance with Department of Conservation and Medical Officer of Health guidelines.

The estimated caution period for the toxins is up to early February 2025.

The attached information sheet will give you details of what the pest control involves and why it is so vital to achieving our conservation goals in the area.

We recommend particular care for neighbours with dogs, or anyone taking their dogs close to this area between September 2024 and February 2025. You are urged not to let dogs enter the Management area, or to allow them to scavenge any possum or rat carcasses lying around the block.

The presence of warning signs indicates that pesticide residues may still be present in baits or animals and are a reminder not to take animals for consumption from within the treatment area.

If you have any further questions, please do not hesitate to contact the Trust on kaharoakokako@gmail.com or DOC Rotorua on (07) 349 7400.



2024 Pest Control in the Kaharoa Management Area

The Kaharoa Kōkako Trust plans to reduce possum and rat numbers over approximately 952 ha of the Kaharoa Management Area. Port Blakely Ltd will also be carrying out pest control along their Pinnacles Forest boundary with the Kaharoa Conservation Area, and in their Te Matai Forest.

What?

In May, the areas adjacent to, or accessible from the end of Kapukapu Road had Pindone placed in bait stations targeting ship rats. In October, the Trust will be using 1080 cereal pellets in bait stations throughout the managed area targeting ship rats, and possums but with the additional benefit of also controlling stoats, ferrets and feral cats from their scavenging of dead rats. Double Tap pellets will be used on the boundaries of roads and neighbour's properties.

When?

Both toxins will be applied either by volunteers or contractors in October 2024 (1080 and Double Tap).

The Kaharoa Kōkako Trust will contact all neighbours and place warning signs immediately prior to the operation. All bait will be removed by November 2024. Warning signs will stay in place until no risk remains from pesticide residue in baits or pest animal carcasses.

What are the risks?

1080 and Double Tap are effective and safe if properly handled. However, there is a risk of poisoning to humans and non-target animals if the bait is handled carelessly or eaten.

Risks can be eliminated by following these simple rules:

- **DO NOT bring DOGS into this area**
- **DO NOT handle any bait**
- **DO NOT allow CHILDREN to wander unsupervised**
- **DO NOT take ANIMALS for eating.**

Dogs scavenging poisoned carcasses are also at risk. Possum carcasses can take up to four months to rot. Dogs are not allowed to enter the Kaharoa Conservation Area while warnings signs are in place. If it is necessary to bring dogs close to the area, keep them on a lead or muzzle them for their protection.

What do I do if I suspect poisoning?

Contact your doctor, the hospital or National Poisons Centre 0800 764 766.

In case of suspected animal poisoning, contact your local vet immediately.

The 'Kōkako Track' will remain open to the public, but walkers should keep to the formed track until February 2025.

www.kokako.org.nz

Why are we controlling possums and rats?

The main threats to native animals are possums, ship rats and stoats. These predators eat eggs, chicks, adult birds, invertebrates, lizards and even bats.

While the kōkako female may put up a fight defending her nest, she cannot prevent them from predated her young and can also be killed herself.

By killing possums and rats, we are protecting kōkako, other forest birds, native bats and other wildlife, and a wide range of palatable plant species. By using bait stations, we can minimize risk to non-target species and recover any unused bait for safe disposal.



How well is this operation planned?

The Department of Conservation has an internal approval process to ensure the operation is meeting Quality Management standards for pesticide use.

These consents entail a detailed assessment of the risks involved in the work. Before approvals are granted, we must demonstrate that we are managing the risks appropriately.

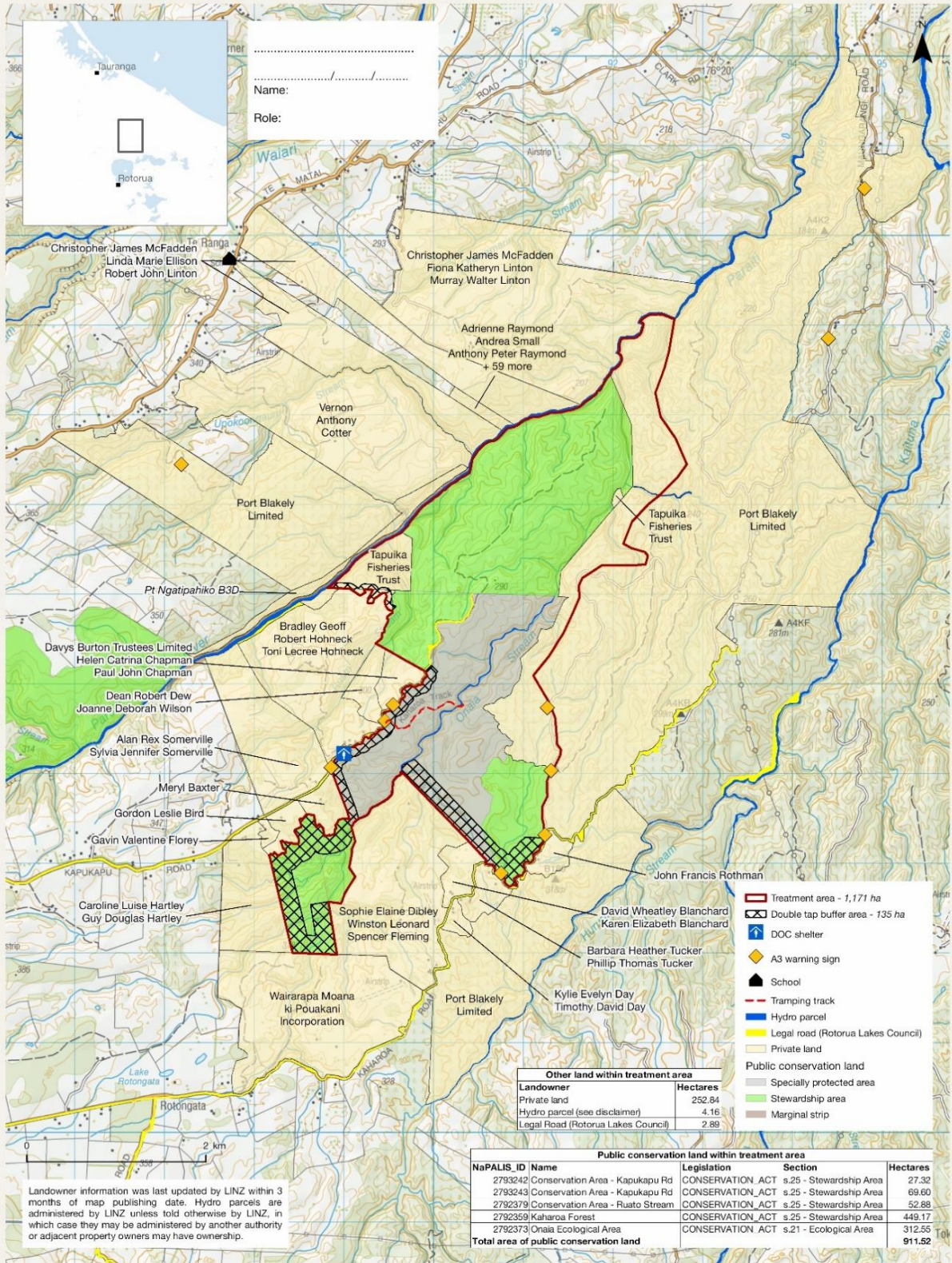
We will consult the people most affected prior to the baiting operation taking place.

The presence of warning signs indicates that pesticide residues may still be present in baits or carcasses.

For more information:

Department of Conservation, phone (07) 349 7400

www.kokako.org.nz



Kaharoa - DOC Permission Application

Ground Predator Control 2024

Treatment area: 1,171 ha

Te Kāwanatanga o Aotearoa
New Zealand Government