



Kaharoa School - Ag Day

Lamb & Kid Rearing

Booklet



Rearing a lamb/kid

Introduction:

This booklet has been written to act as a briefing for judges and competitors so that uniform standards are applied for Ag Day and Group Day. This activity provides a link between school and home and between school and community. It helps to develop in the child an understanding and love for animals as well as self-reliance and resource in carrying out a chosen task.

The learning outcomes should enable the child to:

- Rear a pet Lamb & Kid successfully
- Learn the daily and weekly requirements for caring for a Lamb & Kid/kid
- Train and prepare a pet Lamb & Kid for school Pet Day
- Identify scouring an footrot and know what action to take if they develop
- Describe a number of behavioural traits characteristic of Lamb & Kids
- Observe when a Lamb & Kid has had enough to drink
- Devise a way of ensuring the weekly growth of a Lamb & Kid – height, length and weight. Keep these measurements on a graph if able to do so
- Discuss orally the activities associated with rearing a Lamb & Kid.

Materials required

- | | |
|-----------------------------------|-----------------------------|
| • AnLamb & Kid or whole milk powd | • Lead |
| • Bottle with teat | • Practice ring |
| • Brush | • Rope/Collar |
| • Facecloth | • Shelter provided with hay |
| • Hay | • Drinking water |
| • Lamb & Kid enclosure | |



Rearing a lamb/kid

Attitudes

- Lamb & Kids must be born between 20th July and 25th September.
- The students display a responsible attitude in carrying out the tasks associated with caring for a farm animal.

Activities

- Discuss how to care for a newly born Lamb & Kid. If the Lamb & Kid is in poor condition, the first task is to make it warm. It is a good idea to place it in a sack lined box. If the Lamb & Kid is cold and wet, give it a reasonably warm bath and rub briskly with a towel until dry.
- Give the Lamb & Kid a name.
- Make a shelter for the Lamb & Kid. Prepare a pen with a shelter in it in a sunny position free from draughts. Discuss the reasons for providing a shelter. Place hay in the shelter and replace it when it becomes dirty. Newspaper may be substituted for bedding and it can be burnt as required.

Feeding the lamb/kid

- A newly born Lamb & Kid must have its mother's milk (colostrum) or a homemade mixture of colostrum for 4 days. The following is a good Lamb & Kid mix recipe.
- 1 litre of warm cows milk or dried milk
- 1 egg beaten lightly
- 1 small teaspoon cod liver oil (castor oil can be used in the 1st bottle) OR milk powder especially for Lamb & Kids can be purchased.
- After four days feed four times a day for the first fortnight using four parts of milk to one part of water.
- As the Lamb & Kid grows bigger and gets older provide more milk while reducing the feed times to three up to the age of one month.
- Continue feeding until the Lamb & Kid is able to eat sufficient grass. Usually it is necessary to provide two feeds daily up to the age of 12 weeks.
- Keep bottles and teats clean, as dirty equipment will cause scouring.

Rearing a lamb/kid

Daily Care

- FEED THE LAMB & KID REGULARLY. Observe when it has had enough – the flanks become level with the sides. Never allow it to have a bloated look.
- Brush daily and use a damp cloth to clean around its face, under the legs, on each flank and inside the ears.
- Check the Lamb & Kid shelter for cleanliness
- Wash the feeding bottle and teat after every meal
- Soon the Lamb & Kid will need a tether with a secure stake, which can be shifted from time to time. Initially the tether needs to be short
- Take the Lamb & Kid for a walk using a collar and lead with a snap hook on one end.

Weekly Care

- WEEKLY CARE
- Don't bath the Lamb & Kid. Soap and detergent remove the natural grease and water repellent quality of wool. The Lamb & Kid could contract pneumonia.
- Lengthen the tether as the Lamb & Kid gets used to it
- Loosen the collar gradually as the Lamb & Kid grows
- Watch for scouring (diarrhea). This attracts flies and if the Lamb & Kid should become flyblown it could have to be destroyed. Consult a vet without delay.
- Have Lamb & Kids docked by a sheep farmer or vet. It needs an anti-tetanus injection when docked, especially if a ring is used.
- If the Lamb & Kid limps or kneels down to eat it may have foot rot, a bacterial disease. Obtain help to cut it out or contact a Vet for a spray to cure it.
- Drench for worms and check for lice and keds.
- Commence training the Lamb & Kid from an early age. Make some time each day to play with the Lamb & Kid and caress it.
- Talk to it quietly when feeding and playing with it.

Leading



Leading

- Daily practice can result in a perfect lead at school on Ag Day
- Lead the Lamb & Kid anti-clockwise round the ring stopping at the stop peg to count 1 2 3 before moving on. I left handed, lead clockwise round the rig
- Walk at the same pace as the Lamb & Kid, walk upright and keep to a straight line. Lamb & Kid and child need to move in tandem with right/left legs in time.
- Steer the Lamb & Kid by moving the hand that is holding the lead to the left or right. Make sure the lead from the rope/collar around its neck it not too tight or too loose.



Leading - On the Day

The programme for leading is the same as that used for calves and the child should become familiar with what is expected in the ring.

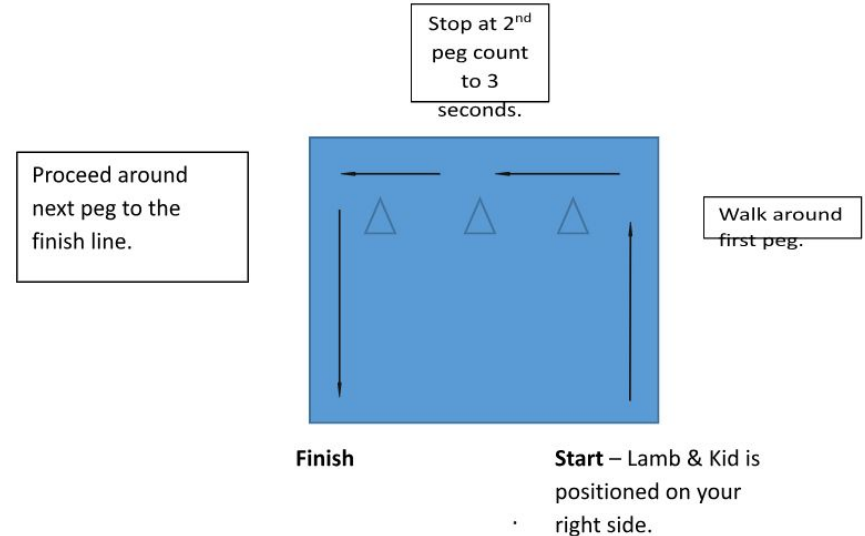
The event is to assess the coordination and cooperation of the child and the Lamb & Kid.

The Lamb & Kid is led anticlockwise round a square. Each child leads the Lamb & Kid around the outside of the peg, stopping halfway to count three. The judge may vary the routine after all children have led, if it is necessary to separate possible place getters. This will be left to the discretion of the judges. The right hand should grip the rope, palm upwards.

The left hand should grip the rope, knuckles upward, leaving a loop of slack rope between the hands.

There should remain only about 30-45 cms of tail end of rope hanging free from the left hand. No loops or trailing ends.

DIAGRAM FOR LEADING SECTION



Leading - On the Day

Pay particular attention to the fit of the halter. Watch the throat especially. Don't use a new halter for the first time on the day.

All control should be exercised by the right hand on the lead. Do not drag your Lamb & Kid.

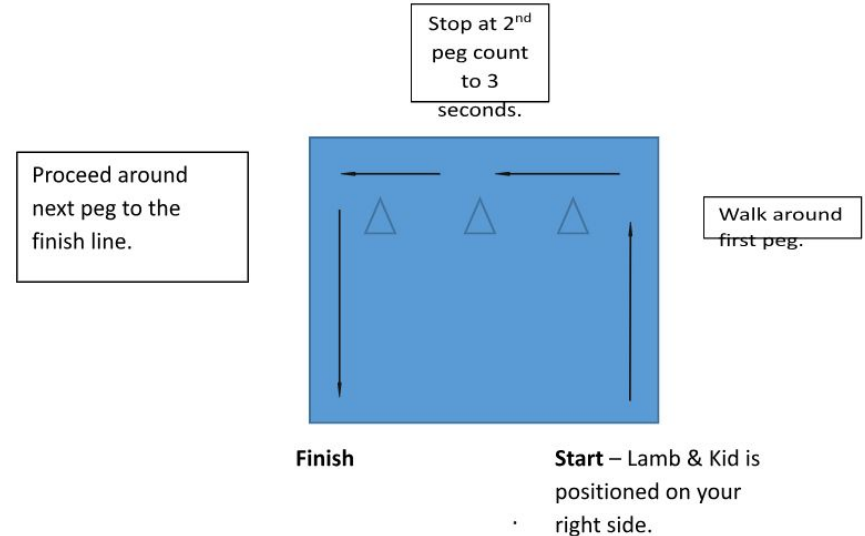
The following actions will be penalized:

- Releasing the right hand grip on the rope at any time
- Touching the Lamb & Kid with the hand during the competition
- Hitting the Lamb & Kid with anything
- Jerking on the halter
- Children are permitted to encourage animals to call with tidbits outside the ring.
- No 'tidbits' allowed in the ring.

NOTE TO JUDGES

No concessions to be made for children's age in championship events. Schools please ensure that all children competing are made aware of these rules and guidelines.

DIAGRAM FOR LEADING SECTION





Calling

Call & Follow

- Train the Lamb & Kid to call, stand some distance from it with a bottle of milk held behind the back. Call it by name. When it comes give it a gentle pat and feed it. By the time of the school pet day the Lamb & Kid should come when called, even if you don't have a bottle of milk in your hands.
- Practice over and over again around the same kind of ring as will be used for the school pet day.
- Have someone hold the Lamb & Kid. Move to the first peg and call it. When it comes give it a pat.
- Walk to the next corner peg with the Lamb & Kid following close behind
- Run along to the next peg with the Lamb & Kid running behind. Practice catching the Lamb & Kid quietly near the ring exist.

NB: These three stages can be taught by giving the Lamb & Kid a drink at each stage while it is young. When it gets older, give it a drink at the finish only and then gradually dispense with the drink altogether.

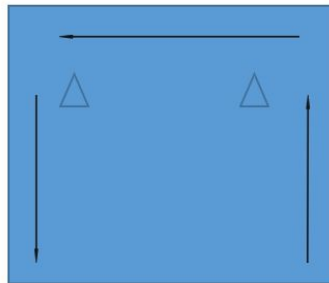
THE CALL AND FOLLOW RING

(12m x 12m) or (20m x 20m)

Stage 3 – The Follow
(Child walks to second peg with pet following).

Stage 2 – The Call
(Child walks to first peg and calls the pet).

Stage 4 – The Catch
(Child runs to the finish, turns and catches the pet).



Finish

Start

Stage 1 – The steward holds the Lamb & Kid. (lead tucked in collar).



Rearing

Raring

This section of a Lamb & Kid project is usually assessed at Pet Day under the following headings:

- Care
- Cleanliness
- Condition

Have a name for the Lamb & Kid and know its birthday and breed

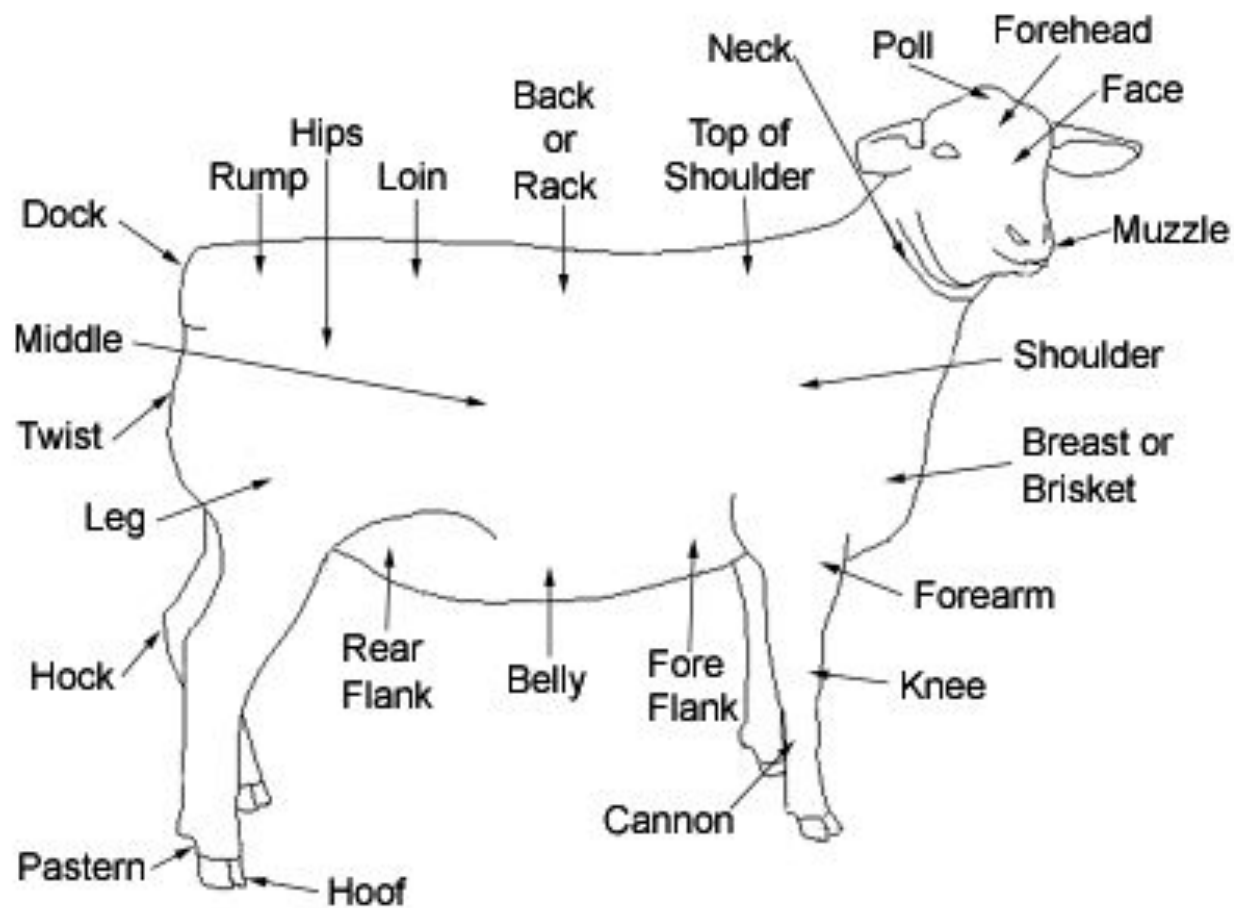
On the day be prepared to discuss various rearing activities

Make sure your Lamb & Kid's ears, face, legs, hooves, flanks and under the stomach are clean for Pet Day. Brush it well.

Some questions you may be asked:

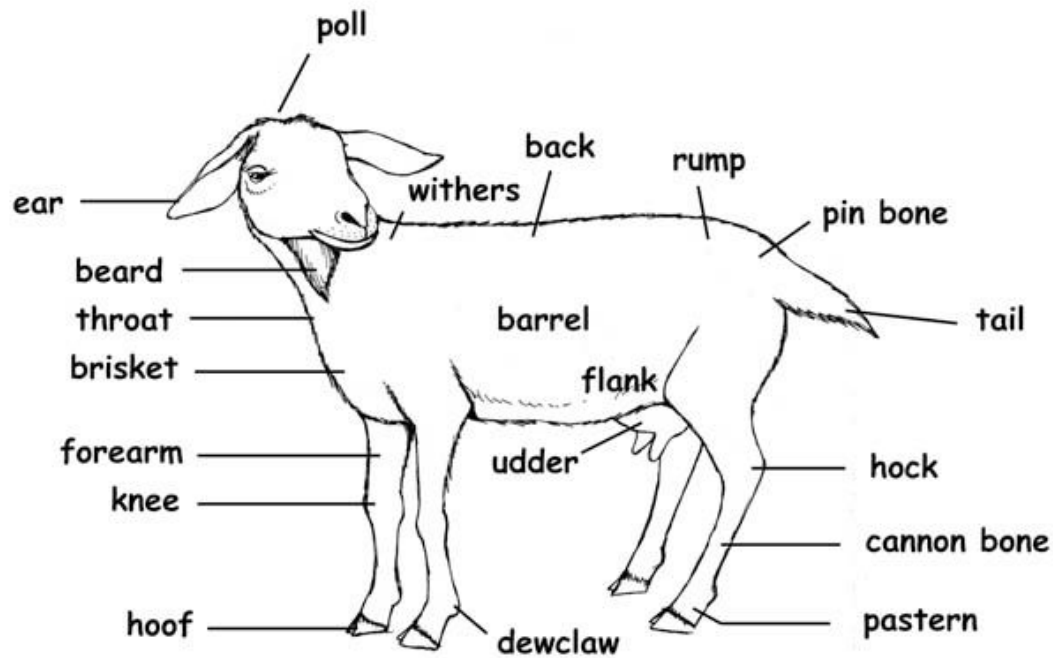
- What is your Lamb & Kids, name?
- What do you feed it on?
- How much do you give it to eat (drink)?
- How often do you feed it?
- Who feeds it when you are not there?
- How have you changed its food as it has grown up?
- What happens if it has too much too eat?
- Where do you keep your Lamb & Kid during the day?
- Where do you keep your Lamb & Kid at night?
- How old is it? When was it born?
- What breed is it? Do you know some other breeds of sheep?
- What is your breed best suited for?
- How have you trained your pet to lead?
- How have you trained your pet to come and to follow you?
- Name various parts of the animal's body?
- What diseases / pests can your pet get and how do you stop the problem?
- How do you keep your animal clean?





The Goat

Capra aegagrus hircus



Extra Information

Most farmers have a few motherless Lamb & Kids each season and if at all possible these are given to foster ewes to feed, but there are always some Lamb & Kids that have to be handfed. These are the perfect ones to have as pets. If you are having trouble finding a Lamb & Kid please contact the school.

You must remember that you are taking the place of the orphaned Lamb & Kid's mother and, after a short time, usually its reaction to your call will result in it running up to the fence and calling for you too. The more effort, time and care you put into your Lamb & Kid the better the result will be on LCC Day. To be eligible to enter Lamb & Kids must be born between 20 July and 25 September. They must also have their tails docked before competing. We are lucky enough to have a VetPlus vet come to school and do this for free. We will let you know when this is happening to be sure you can take advantage of this great service.

There are three categories; Junior (years 1-3), Intermediate (years 4-5) and Senior (years 6-8).



Shelter

Prepare a small pen with shelter in a sunny position, free from draughts. This is necessary for young Lamb & Kids, and even older ones like shelter where they can get out of the wind and rain, and the sun on hot days.

Have hay in the shelter for the Lamb & Kid to lie on, and keep replacing the hay when it becomes dirty or wet. It will not be long before the Lamb & Kid is quite vigorous and will want to get out of the pen. You will then have to tether it, or let it run in a small, fenced, disease free paddock. Do not allow your Lamb & Kid access to garden shrubs, as some are poisonous (e.g. Oleander, Kalmia, Rhododendron).

Remember to make sure that the Lamb & Kid can get back to its warm dry pen at all times, especially at night or when the weather can turn stormy.

FEEDING

Remember to do the same things in the same order each time before a feed. Use a milk replacer designed for Lamb & Kids and follow the manufacturer's directions. This can be obtained from your local farming supply store i.e RD1 or Farmlands.

Feed your Lamb & Kid “little and often” for a start. Gradually increase the amount of food and decrease the number of meals. Feed three to four times daily for six weeks on 800ml – 1.2 litres of milk at body temperature.

After six weeks increase the milk supply to 1.7 litres or more daily, according to the appetite of the Lamb & Kid. (See – Daily Care in Lamb & Kid Booklet)

Fresh grass to run on is necessary for the Lamb & Kid. The Lamb & Kid will also start eating grass after about three weeks.

Tips for success

- Keep the Lamb & Kid clean by making a cover for it.
- Keep the Lamb & Kid's bed clean and dry (fresh hay, or newspaper, when necessary).
- Wash the feeding bottle and teat after every meal. Allow your Lamb & Kid access to clean drinking water too.
- Have either a collar and lead with a snap hook on one end, or a halter similar to that used for calves (in some cases this is more efficient) for leading or tying up your Lamb & Kid.
- Provide shade in hot sunny weather.
- Don't wash your Lamb & Kid.



TRAINING – see also Call & Follow above

You should try and get your pet Lamb & Kid when it is only a few days old. Whenever possible feed it yourself, as it will only become really friendly to you if you feed it.

To train your Lamb & Kid/goat, stand with the bottle of milk behind your back some distance (about 10 meters) from the Lamb & Kid and call it by name. When it comes to you give it a gentle pat and feed it. At all times be careful not to tease or frighten your Lamb & Kid, as it will only be trusting and affectionate if you are kind. Try and make some time each day to play with your Lamb & Kid so that you both get to know each other well. Talk to it quietly when feeding it and playing with it.

Before competition day try to practice these three key exercises.

- Exercise 1: Get someone to hold your Lamb & Kid, stand about 5 metres away from it, and call it. When it comes give a little pat for a good effort.
- Exercise 2: Walk along with your Lamb & Kid following behind. Be careful not to walk too fast for it.
- Exercise 3: Run along with your Lamb & Kid running behind. After running about 5 metres stop and catch your Lamb & Kid. Practise catching it quietly. Remember the judge will be watching as it helps him to know whether your Lamb & Kid is really friendly or just hungry.

NOTE: These 3 exercises can be taught to your Lamb & Kid by means of giving it a drink at each stage while it is young and when it gets older only give it a drink at the finish then gradually cut out the drink so the Lamb & Kid will do the 3 exercises without a drink.